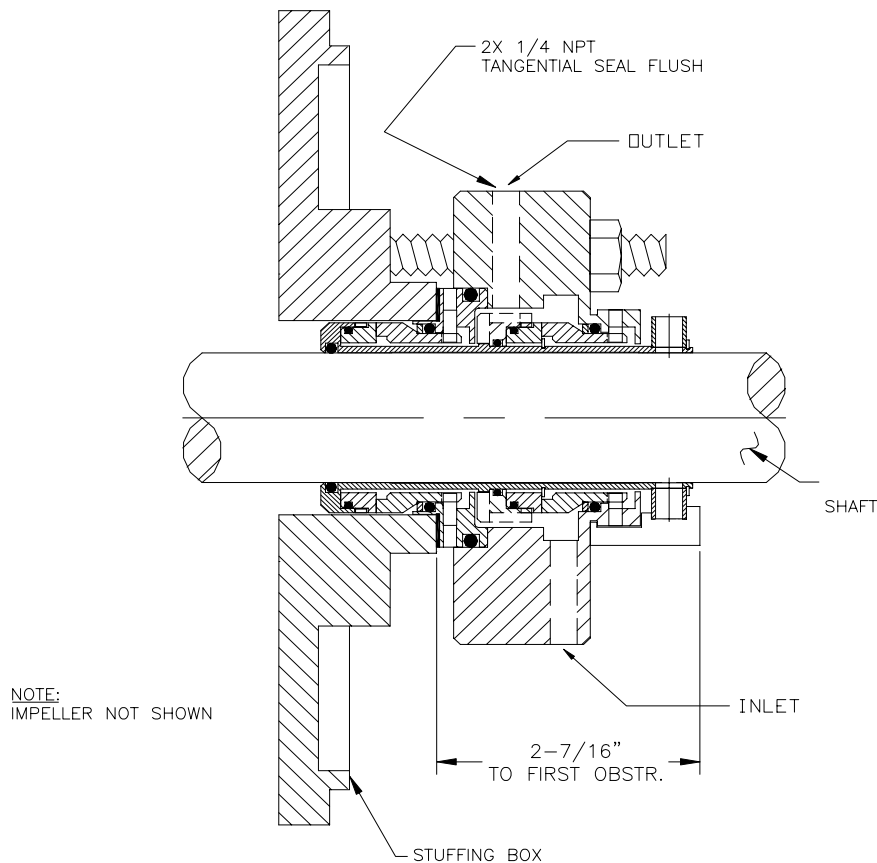


# ZMT ZND Double Cartridge Seal Installation Instructions



- 1) Inspect pump for shaft for run-out and shaft deflection.
- 2) Inspect sleeve/shaft for burrs or nicks that might cut shaft o-ring.
- 3) Lubricate shaft o-ring with liquid soap or silicon based lubricant. **DO NOT USE OIL OR GREASE.**
- 4) Slide seal on shaft.
- 5) Install stuffing box into pump frame adaptor.
- 6) Bolt stuffing box to frame adaptor.
- 7) Bolt seal to stuffing box.
- 8) Tighten impeller onto the shaft.
- 9) Set Impeller Clearance.
- 10) Tighten set screws to shaft.
- 11) Remove black nylon tie strap that holds seal clips to the seal gland.
- 12) Remove clips from seal.
- 13) Connect seal flush inlet connection to the port marked "IN", & seal flush outlet connection to the port marked "OUT". **NOTE:** Place flush Inlet port the down position.

**NOTE:** Failure to connect flush connection will shorten seal performance. Plugging the flush connection is NOT recommended.

ZM Technologies  
Stockton, CA 95205

Phone: 209-547-1965  
www.zmtech.com

FAX: 209-464-8140  
e-mail: zmtech@zmtech.com